



# PBS Geovision Based DVR Feature List



## HARDWARE

- >> UP TO 16 CAMERAS per DVR (Analog Inputs)
- >> UP to 32 CAMERAS per DVR with Hybrid System (16 Analog, 16 IP Cameras)
- >> Rack-Mount or Free Standing Chassis, using Industry Standard computer components
- >> Windows XP O/S

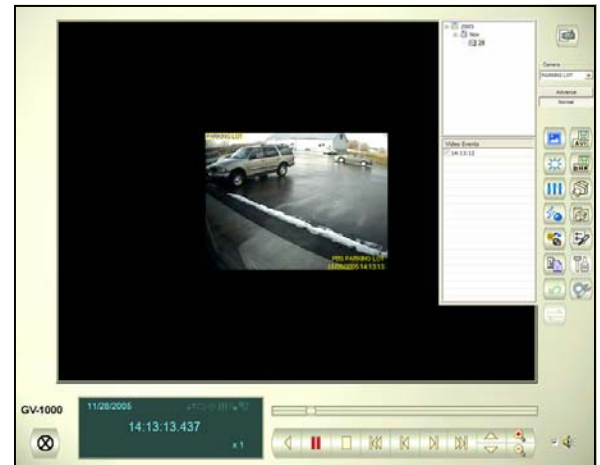
## Recording

- \* Privacy Mask Protection
- \* Advanced Motion Detection
- \* Scene Change Detection
- \* Pre-Recording Using HDD
- \* Advanced Round-The-Clock Recording
- \* Instant Playback
- \* Time Merge From Different Clips
- \* Password Expiration Management
- \* New Codecs: Geo H264, Geo MPEG4 ASP
- \* System Idle Protection
- \* Spot Monitor Controller
- \* POS Live Viewer
- \* Photo-ID Integration (GV-WT)
- \* Hard Disk Calculator



## High Powered Smart Video Searching

- \* Timeline Search
- \* Face Detection for Object Index
- \* Object search
- \* Index search
- \* Object Index
- \* Thumbnail browse for ease of search for specific frames within video footage
- \* Export a video footage within a specified time range
- \* Synchronized audio and video for both live and playback modes
- \* Continues playback of set frames A to B
- \* EXE format export, playable with any third-party players
- \* AVI format export in multiple screens mode
- \* DVD format export for Hybrid Card format files
- \* Option for recycling the input-triggered events (Never recycle function)
- \* Backup, save AVI and BMP functions accessible in LAN ViewLog
- \* Automatic refresh of the video event list in LAN ViewLog



## Other Useful Features

- \* Higher Screen Resolutions (1920 x 1200, 1680 x 1050 and 1600 x 1200)
- \* Touch Screen Support
- \* Full screen view
- \* Dual display operation for live monitoring and ViewLog playback on two monitors
- \* Screen pop-ups on motion or alarm activation
- \* Object counting
- \* Object tracking and zooming by PTZ domes
- \* Unattended and missing object detection
- \* Alarm on objects passing between predefined regions
- \* Digital watermark
- \* Video lost detection
- \* On screen video loss message
- \* Video de-interlace filter
- \* Synchronized video and audio
- \* Backlight compensation
- \* Video auto gain controller
- \* Video scaling filter

- \* Higher screen resolution support of 1280 x 1024
- \* E-map
- \* Windows lockup
- \* Image size indicator
- \* AVI repair utility
- \* System log
- \* Support 1,000 accounts for logins and passwords
- \* Multi level passwords protection
- \* Use Microsoft Remote Desktop to control another GV-System
- \* Twin DVR
- \* Embedded I/O devices control
- \* Embedded PTZ control panel
- \* Support dynamic IP address

## Audio Option

- \* Up to 16 channels of live audio streaming and recording
- \* Playback Audio with Video together in View Log, including Smart Searches.



## Notification

- \* E-mail notification with attached video images on motion and alarm activation
- \* E-mail or telephone notification on video lost or I/O error
- \* Directs PTZ camera to a preset location on motion and alarm activation
- \* Alarms on objects that pass between predefined regions

>> This system is capable of connecting up to 72 optional I/O devices such as motion sensors, smoke detectors, or PTZ cameras. When a detector or alarm is triggered, the system will quickly send an alert to your mobile phone or email, allowing you to act as quickly as possible.

## SECURITY

- \* RSA Network Security
- \* Authentication Server: central control of password settings in local GV-DVRs

## Remote Monitoring Software Included

- \* Remote View
- \* IP Multicast
- \* WebCam
  - POS Live View via IE Browser
  - 3G Mobile Phone Support (3GPP)
  - SSL Encrypt Connection Support
  - UPnP™ Support
- \* Remote Playback System
- \* G-View for WinCE PDA
- \* I-Mode

## Central Monitoring Station (CMS) (Software Option)

- [Center V2](#)
- [Vital Sign Monitor](#)
- [Dispatch Server](#)
- [Control Center](#)

**PRIORITY** Business Systems, LLC

2108 S. Hume Ave.  
 Marshfield, WI 54449  
 sales@prioritybiz.net

**(715) 384-0069**

## **\*\* OTHER Useful Features & Enhancements**

### MPEG4 (ASP) & H.264 Video Codecs

>> Utilizing compression techniques that deliver crisp, clear video in much smaller files than before.

### Video Mask Protection

>> This new video mask filter is used to protect sensible area, for example during the usage of ATM Keypad. The protected region can be integrated in original video sequence or using RSA encryption password-protection for retrieval later.

### Advanced Motion Detection

>> Multiple predefined regions can be marked per camera. Each region can be customized with different level of sensitivity.

### Scene Change Detection

>> Using this new intelligent feature, you can detect malfunction, obstruction or tampering of the camera, by change of the view angle, scene, or clarity of focus.

### Control Center

>> A powerful centralized management application where you can manage all DVR settings, view all video archives and control their I/O remotely from one single terminal station.

### Drive Storage Calculator

>> This new tool is used to analyze and calculate the precise storage requirement for your recording application.

### Swap HDD Utility

>> Upon insertion of an external storage (USB, Firewire , or hot-swap Serial ATA), your DVR recording storage capacity is added automatically without turning off/resetting the DVR. The recording path is added automatically and the video Viewlog can also be transferred for later view on another PC.

### POS Live Viewer

>> Multiples POS transactions can be viewed live. Each window can be group together or divided into individual displays. The transactions items and text attributes can be customized as well.

### Easy Backup

>> Backup Video evidence directly to CD / DVD burner without any additional burning software.

### Enhanced Network Security using RSA Encryption

>> Live video is encrypted when sent over the internet.

### Export AVI Footage with Multiple Camera Images

>> You can choose to play back multiple cameras at once, VS. one camera at a time per video file.

## **\*\* Version 8.2 due soon. Enhancements include:**

### **New features to Main System:**

- Hybrid Solution integrating analog videos with digital videos from GeoVision IP video products and third-party IP cameras
- Noise Tolerance for motion detection
- Noise Detection to reduce file size
- Noise Filter to filter out video and audio noise
- Defogging live videos (option)
- Video Stabilizer (option)
- PIP and PAP Views
- Panorama View (option)
- Report Generator
- New codec Geo H264 V2
- Multithreading encoding
- Support for cardholder data from GV-Video Server
- Support for new screen resolutions: 1280 x 800, 1440 x 900 and 1920 x 1080
- Support for new PTZ tracking domes

### **New features to ViewLog:**

- Support for new screen resolutions: 1280 x 800, 1440 x 900 and 1920 x 1080.
- Support for new video-enhanced effects: Defog and Stabilizer
- PIP and PAP Views
- Panorama View
- Splitting files for backup onto multiple discs.  
Extracting frames from a video clip during playback

### **New features to WebCam:**

- New web GUI
- Control Panel on Single View to provide instant information and operation
- PIP and PAP Views in Single View
- Support for defogging live videos in Single View
- Support for Video Stabilizer in Single View
- Restricting Power User and User to access WebCam Server at specified time length
- Event List Query
- Download Center
- Drag-and-drop support for camera, PTZ and I/O icons on the 2 Windows of Mpeg 4 Encoder Viewer
- Addition of "Use small icon" option in Remote E-Map before.